

SPRING AWAKENING

A NEW MUSICAL

Book & Lyrics By
Steven Sater

Music by
Duncan Sheik

Based on the play by Frank Wedekind

Codirected By
Erin Campbell & Becky McLean

MARCH 17 - APRIL 2

Connecticut Theatre Company

Presents

SPRING AWAKENING

**Book & Lyrics by
STEVEN SATER**

**Music by
DUNCAN SHEIK**

Based on the play by Frank Wedekind

Original Broadway Production Produced by IRA PITTELMAN, TOM HULCE, JEFFREY RICHARDS, JERRY FRANKEL, ATLANTIC THEATRE COMPANY, Jeffrey Sine, Freddy DeMann, Max Cooper, Mort Swinsky/Cindy and Jay Gutterman/Joe McGinnis/Judith Ann Abrams, ZenDog Productions/CarJac Productions, Aron Bergson Productions/Jennifer Manocherian/Ted Snowdon, Harold Thou/Terry Schnuck/Cold Spring Productions, Amanda Dubois/Elizabeth Eynon Wetherell, Jennifer Maloney/Tamara Tunie/Joe Cilibrasi/StyleFour Productions

The world premiere of "SPRING AWAKENING" was produced by the Atlantic Theatre Company by special arrangement with Tom Hulce & Ira Pittelman.

**Orchestrations
Duncan Sheik**

**Vocal Arrangements
AnnMarie Milazzo**

**String Orchestrations
Simon Hale**

March 17 - April 2

**The Repertory Theatre
23 Norden Street
New Britain, CT 06051
(860) 223-3147**

www.ConnecticutTheatreCompany.org

SPRING AWAKENING
is presented through special arrangement with Music Theatre International (MTI).
All authorized performance materials are also supplied by MTI.
www.mtishows.com

***The videotaping or other video or audio recording of this
production is strictly prohibited.***

A MESSAGE FROM THE EXECUTIVE DIRECTOR

Welcome back to Connecticut Theatre Company! We are so excited to have a full season of four shows planned for you; our first since the beginning of the pandemic! We are so grateful for your continued support and patronage.

We have a great season ahead kicking off with this production of Spring Awakening. Spring Awakening is a bold show that tackles a lot of different tough topics. It's important to us at Connecticut Theatre Company to showcase all different types of shows. This one, while at times uncomfortable, is important in providing a voice to people who don't always have one. We've included a page of resources in this program for anyone who needs them.

Following Spring Awakening we have Head Over Heels, a fabulously entertaining musical featuring songs from the Go-Go's. In September we have the musical Zanna Don't, and we'll be closing out the season with The Drowsy Chaperone. There's truly something for everyone this season and I hope you enjoy this variety of shows!

Flex passes are always available and are a great way to get a discount when coming to multiple performances! See our box office staff for more information.

Warm Regards,

Duane Campbell,
Executive Director of Connecticut Theatre Company

DIRECTOR'S NOTE

Dear Audience Member,

We would like to warmly welcome you to our production of Spring Awakening. This show has been a labor of love and we have long looked forward to this exciting moment where we get to include you on our journey. We have enjoyed our time working together with the cast and the rest of the production team and have developed lasting bonds over the course of our rehearsal period. This closeness between cast and production team has enabled us to tell this important story in a compassionate and honest way.

The original play was written by Frank Wedekind in 1890s Germany as a way to shockingly confront audiences with what he considered to be the societal ills of his time. These issues included: an unwillingness to prepare children for their own sexual maturity, the pressure to conform, and a lack of access to safe healthcare for women and their bodily autonomy. The 2006 Broadway musical leaned heavily into these themes and sought to punctuate this angst through alternative rock. The modern touches in that adaptation, as well as in tonight's performance, are ever present reminders that while the time and setting are far removed from modern America, the issues at hand are not.

Spring Awakening is the kind of show that attracts a cult following and it is easy to see why. The show is a tribute to the tumult of emotions experienced by young people as they seek to navigate a world that is antagonistic to their existence -- a shared despair of every generation. In this production, you will notice a distinct difference between the adult-dominated world and that of the teenagers. While adult-world is dreary and mundane, the world of the teenagers springs to life through vibrant color and song: we are invited to the front row rock concert of their inner imagination. These songs brilliantly and painfully capture what that feeling of youth is like, lest we've forgotten.

Ultimately, Spring Awakening is a show about consequences. In this show, we see teenagers make mistakes in a world where there are devastating results. But we have to ask ourselves, who ultimately is to blame for what transpires? And importantly, what can we learn and how can we help our next generation cope with the perennial challenges all teenagers face so that the cycle of trauma can finally end? It will come as no spoiler, but the issues in Spring Awakening have no neat resolution; we know this because we are facing them still today. With that, all we can leave you with is a song of Purple Summer in the hope that one day things will get better. In the meantime, we must walk on with friends at our sides and courage of conviction in our hearts.

Erin Campbell & Becky McLean
Co-Directors

MUSICAL NUMBERS

ACT 1

MAMA WHO BORE ME
MAMA WHO BORE ME REPRISE
ALL THAT'S KNOWN
THE BITCH OF LIVING
MY JUNK
TOUCH ME
THE WORD OF YOUR BODY
THE DARK I KNOW WELL
THE WORD OF YOUR BODY (REPRISE)
AND THEN THERE WERE NONE
THE MIRROR - BLUE NIGHT
I BELIEVE

15 MINUTE INTERMISSION

ACT 2

THE GUILTY ONES
DON'T DO SADNESS
BLUE WIND
DON'T DO SADNESS / BLUE WIND
LEFT BEHIND
TOTALLY FUCKED
THE WORD OF YOUR BODY (REPRISE 2)
WHISPERING
THOSE YOU'VE KNOWN
THE SONG OF PURPLE SUMMER

CAST OF CHARACTERS

MORITZ.....	JAVEN LEVESQUE
MELCHIOR.....	GALEN DONOVAN
GEORG/DIETER.....	KEVIN KILEY
HANSCHEN/RUPERT.....	GREG MAHONEY
OTTO/ULBRECHT.....	TIERNAN SHEA
ERNST/REINHOLD.....	MAX DITTMAR
WENDLA.....	MONTANA TELMAN
ILSE.....	KERRIE MAGUIRE
MARTHA.....	KRYSTINA DIAZ
ANNA.....	FAITH FERNANDES
THEA.....	SARAH FORD
ADULT MEN.....	STEPHEN MAHER
ADULT WOMEN.....	CINDY MAHER

CAST BIOS

KRYSTINA DIAZ (MARTHA): Krystina is thrilled to be back at CTC, and feels so fortunate to be surrounded by such incredibly talented and dedicated cast and crew. They thank everyone for making the experience of working on the show an absolute pleasure, and hope there are opportunities to work together again. Every one of you is so lovely; have an amazing show and I can't wait to see what you all do in the future!

MAX DITTMAR (ERNST/REINHOLD): Max Dittmar is incredibly excited to portray Ernst and Reinhold in CT Theatre Company's 2023 production of Spring Awakening! A Connecticut native, Max has looked forward to returning to theatre since his most recent role as Romeo in Romeo and Juliet at RWU in 2017. When he's not at rehearsal, Max enjoys making coffee at his job as a barista, crocheting, and spending time with his cat Clementine.

CAST BIOS

GALEN DONOVAN (MELCHIOR): Galen is so proud and excited to be playing Melchior in CTC's production of "Spring Awakening"! Previous credits with CTC include Young Scrooge in "A Christmas Carol", Scott in "Disaster!" and Lon Smith in "Meet Me In St Louis".

This show, from production team to cast and every one in between, has created a family that loves so deeply and supports each other so fiercely. It has been a life changing experience that will never be forgotten. Galen's note to his SA family: "I love you guys more than words can say. Now are we gonna rock this?? YEEESSSSS!!!"

FAITH FERNANDES (ANNA): Faith is excited to make her debut at Connecticut Theatre Company! She is thrilled to be in her dream show and more than excited to be a part of this amazing and fabulous cast! She is currently a Kindergarten teacher and her favorite credits include "Chicago" as Featured Dancer (Square Foot Theatre), "Mr. Burns" virtual as Colleen/Bart (Brookfield Theatre of the Arts), "All Together Now" as Soloist (CYT), "American Idiot" as Ensemble/Dance Captain (Brookfield Theatre of the Arts), "In the Heights" as Vanessa (Arts in CT), and "West Side Story" as Francisca/Dance Captain (Wilton Playshop). She wants to thank her supportive coworkers, friends, and family! Thank you mom and dad for consistently listening to me sing this album for the past 10 years and believing I would be onstage in this role. To the production team thanks for taking a chance on me and making my dreams come true! To this cast you all hold a special place in my heart and my junk is you!

SARAH FORD (THEA): Sarah Ford is so excited to be back on stage in one of her favorite shows! She currently works at St Dominic's Day Care in the infant room! She has plans to return to school this fall to continue her studies to get a BFA in Musical Theatre! Past shows include The Usherette in "Rocky Horror Picture Show" (Squarefoot Theatre), The Seasons of Love Soloist in "Rent" (Get Up Stage Company), Stoner Chick in "Heathers" (Get Up Stage Company), Mabel Washington in "Fame: The Musical" (Wethersfield Teen Theatre Company)! She would like to thank her mom, her family, her best friends, and her amazing and talented cast for supporting her! This is her second time doing this amazing show and she hopes everyone enjoys the show just as much as she does!

KEVIN KILEY (GEORG/DIETER): Kevin Kiley is so honored to be stepping back onstage with Connecticut Theatre Company! Being a part of this show has been such an incredible experience. "This is one of the most special casts and production teams I've ever had the pleasure of working with! Please check out my debut singles on all streaming platforms" - Kevin Kiley, @kevinkileymusic

CAST BIOS

JAVEN LEVESQUE (MORITZ): Javen Levesque is a college sophomore and aspiring actor. His stage debut was only last summer, where he played the role of Jekyll & Hyde in Get Up Stage Company's production of "Jekyll & Hyde". Since then, while working and continuing his studies, he has continued to explore the stage. He portrayed Jean Valjean in "Les Misérables" and most recently Melchior Gabor in Shoreline Theater Academy's production of "Spring Awakening", where he was unable to perform due to a Covid infection before opening night. He is delighted to be back and thrilled to have the opportunity to play Moritz alongside the wonderful and talented cast and crew at Connecticut Theater Company.

KERRIE MAGUIRE (ILSE): Kerrie is so excited to be making her Connecticut Theatre Company debut! Kerrie is a freelance game developer currently writing for Crop Circle Games. She is also pursuing her Sex Educator Certification and does work focused on combining sex/intimacy education with narrative-focused games. Recent roles include Scarlett in the East Coast premiere of "Wife/Worker/Whore" (Hole in the Wall), Kaliope in "She Kills Monsters" (Hole in the Wall), Agnes in "She Kills Monsters: Virtual Realms" (Backyard Theatre Ensemble/Monarch Theatrical), and The Usherette in "Rocky Horror" (Phoenix Theatre Company). Resources for those experiencing sexual abuse: RAINN.org (confidential online chat available), National Sexual Assault Hotline: 1-800-656-4673

CINDY MAHER (ADULT WOMEN): Cindy Maher is thrilled to be part of such a beautiful production. Also, after almost 30 years of marriage, she is excited to finally act like an adult with her husband Stephen for the very first time.

STEPHEN MAHER (ADULT MEN): Stephen Maher returns for his eighth show with CTC after portraying The Ghost of Christmas Present in December's "A Christmas Carol." Previous shows here include "9 to 5," "Disaster!," "Into The Woods," "The Man Who Came To Dinner," "Jekyll & Hyde," and "Christmas Schooner." He really just wanted to drop off the clock.

GREG MAHONEY (HANSCHEN/RUPERT): Greg Mahoney allegedly appears in this show. It is rumored that he is ecstatic to be joining this incredibly talented and kind cast. Sources claim that he would like to thank his friends, family, and wonderful girlfriend Sarah for all the love and support that they have shown him. We believe that he would like to thank everybody for coming, but we can neither confirm nor deny.

TIERNAN SHEA (OTTO/ULBRECHT): Tiernan teaches Social Studies at Hamden Middle School, and coaches football at Sheehan High School. This is his first show in almost 9 years, and he's glad to be returning to CTC. He was last seen on the CTC stage as Ensemble/Mr. Jefferson in "RENT". Huge shoutout to the cast who have quickly become like family; and all the directors/crew who make all of this possible.

CAST BIOS

MONTANA TELMAN (WENDLA): Montana is ever so grateful to be playing a dream role of hers since she was 14. Thank you to everyone on the production team for the opportunity and endless support; thank you everyone in our incredibly talented cast for holding each other up no matter what. Thank you for making me feel at home! When she's not onstage, she's serving coffee at her coffee shop, crossroads. in North Haven. Some previous favorite roles include: Veronica Sawyer in "Heathers" and Sally Bowles in "Cabaret."

PRODUCTION TEAM

CO-DIRECTOR.....ERIN CAMPBELL
CO-DIRECTOR.....BECKY MCLEAN
STAGE MANAGER.....SETH VANNATTER
MUSIC DIRECTOR.....NICK STANFORD
CHOREOGRAPHER.....KIM SALTZMAN
DANCE CAPTAIN.....JULIA LEBA
COSTUME DESIGN.....KATHRYN LEWIS
COSTUME ASSISTANTS.....KAT BLAIR, BRENDON ROGERS, LEAH VARRELL
INTIMACY DIRECTOR.....ALYSSA (ALLY) BROWN
FIGHT CHOREOGRAPHER.....ANTHONY YOVINA
SET CONSTRUCTION.....JOE ZEPKO
SET TEAM.....KIM SALTZMAN, ERIN CAMPBELL, DUANE CAMPBELL,
.....KERRIE MAGUIRE, BECKY MCLEAN
LIGHTING OPERATOR.....DAVID NUNNER
SOUND OPERATOR.....DUANE CAMPBELL
LATIN CONSULTANT.....DR. MIRIAM KAMIL
GERMAN CONSULTANT.....LAURA KERTON

PRODUCTION TEAM BIOS

ERIN CAMPBELL (CO-DIRECTOR): Erin is extremely excited to be on the production team as Co-Director for this beautiful show. The music has always had a special place in her heart since she first heard it back when it opened on Broadway. Although the messages in this show may be hard for a lot of people to hear, she feels like the story needs to be told and discussed. When Erin is not behind the scenes, she can be seen acting on the stage as well as being the Vice-President of the Board of Directors here at CTC! She would like to thank the entire production team and cast for making this such a memorable experience and for putting together something so magnificent. Special thanks go out to her Co-Director Becky McLean for everything and for being so AMAZING at her first journey into directing! And lastly, thank you to Duane Campbell for being my person, my soft place to land and my biggest cheerleader! Please enjoy the show!

BECKY MCLEAN (CO-DIRECTOR): Becky is ecstatic to be a Co-Director of Spring Awakening. This show has rocked her world since she first heard the Original Cast Recording in 2007 and although she is no longer a teenager, the songs are still the anthem of her life. This is Becky's directorial debut but has performed on the CTC stage in "A Christmas Carol", "The Full Monty", "9 to 5", and "Holiday Inn". Becky also serves on the CTC Board of Directors as Secretary. Outside of theater, Becky works for the State of Connecticut as an Air Pollution Control Engineer. She attended the Yale School of Forestry and Environmental Studies and The University of Central Florida. She would like to thank her support system: Mom, Susie, Amy, Kim, Emma, Ace Gang, and especially Nick. Thank you, Erin, for embarking on this journey with me! Finally, a heartfelt thanks to the cast and production team, crew, and pit of Spring Awakening. Break a leg, I am so proud!"

KIM SALTZMAN (CHOREOGRAPHER): Kim Saltzman is excited to be serving as choreographer for this production! She attended Springfield College receiving an MSOT and BA in Dance; now currently working as an OTR/L and dance instructor at Rockwell Dance Center, Trumbull CT to all ages of children. Saltzman has choreographed in a variety of dance and theatre productions over the last 9 years including but not limited to "Christmas Carol" (CTC), "Nutcracker" (PACC/ RDC), "Full Monty" (CTC), and Numerous repertoire at Springfield College and local events in CT. She is honored to serve as residential choreographer here at CTC and work with an amazing and talented cast. She would like to thank her friends and family for always encouraging her to "Kim it her all".

NICK STANFORD (MUSIC DIRECTOR): Nick is a frequent figure in community musical theater across Connecticut. He is the resident Music Director for Connecticut Theatre Company and GetUp Stage Company, and plays piano for other groups as often as he can. He is also the pianist for Shoreline Unitarian Universalist Society in Madison. Professional credits include subbing on Keys 2 at Playhouse on Park, Seven Angels Theatre, and The Ivoryton Playhouse. Favorite MD credits include "Beauty and the Beast", "Into the Woods", and "Disaster!" He received his BA in Music from UConn studying piano under Irma Vallecillo and took graduate coursework at Indiana University. Thank you to my mom and Becky for always supporting me.

PRODUCTION TEAM BIOS

SETH VANNATTER (STAGE MANAGER): Seth VanNatter is a graduate of Ball State University with a BS in Directing with a minor in Technical Theatre. Some of Seth's favorite shows they've worked on were "A Little Night Music", "The Amish Project", and their original play, "Valerie". Outside of the theatre, they spend most of their time in drag as Enigma Jones, performing all over the state of Connecticut. They have loved the opportunity to get back behind the scenes to stage manage this compelling story that needs to be told right now.

KATHRYN LEWIS (COSTUMER): This is Kathryn's first show costuming at CTC, after helping with costumes for "9 to 5" and "A Christmas Carol", both of which she also stage managed. Previously Kathryn has served as costumer for several shows for Wig and Buckle Theater Company at Lebanon Valley College. When she's not in the theater or at her day job, Kathryn loves to knit and sew, and her knitting friends inspired her to take up sewing again, without which she would not feel confident to do this! Thanks to Becky, Erin, and Seth for being great partners, and to her costuming crew Kat and Brendon for giving up their free time to help her out.

JULIA LEBA (DANCE CAPTAIN): Julia is so excited to be back at CTC now being a part of her first production team role! Julia has been dancing competitively her whole life as well as dancing in musical theater productions and is excited to have had this opportunity to help teach dance in whatever way she was able to!

ALYSSA (ALLY) BROWN (INTIMACY DIRECTOR): Alyssa has been performing and participating in theater productions for over 19 years. She was a BFA Acting Major at CCSU, and currently holds the position of Assistant Director, and Intimacy Coordinator for "Get Up Stage Company" based out of New Britain, CT. "Working on this production has been an amazing experience with this cast. Their ability to leave it all on the stage is astonishing. You really have something fantastic ahead of you"

ANTHONY YOVINA (FIGHT CHOREOGRAPHER): Anthony is very excited to be a part of Connecticut Theatre Company's production of Spring Awakening. He has recently been the fight choreographer for Bristol Arts Innovative Magnet School's production of "A Christmas Carol", as well as Get Up Stage Company's production of "Jekyll and Hyde". Anthony studied at Central Connecticut State University where he received a BFA in Acting, as well as an MFA in English/Theatre Education. He would like to thank the cast and crew for giving him the opportunity to work with such an amazing group of brilliant theater artists.

PRODUCTION TEAM BIOS

STEVEN SATER (BOOK & LYRICS): Steven Sater was awarded the 2007 Tony Awards for Best Book of a Musical and Best Original Score for *Spring Awakening* along with the Drama Desk and Outer Critic Circle Awards for Best Lyrics. With alt-rocker Duncan Sheik, he received the 2007 Grammy Award for Best Musical Show Album for *Spring Awakening*. In addition, the two received The Dramatists Guild Hull-Warriner Award, the Outer Critics Circle, the Drama Desk, the Lucille Lortel, New York Drama Critics' Circle, and Drama League Awards for Best Musical. Steven is the author of numerous plays, including the long-running *Carbondale Dreams*, *Perfect for You*, *Doll* (the Rosenthal Prize, Cincinnati Playhouse); *Umbrage* (Steppenwolf New Play Prize); *A Footnote to the Iliad* (New York Stage & Film, The Miniature Theatre of Chester); *Asylum* (Naked Angels); *Murder at the Gates* (commissioned by Eye of the Storm); *In Search of Lost Wings* (Sanford Meisner Theater) and a reconceived version of Shakespeare's *Tempest*, with music by Laurie Anderson, which played London's Lyric Hammersmith and toured throughout Great Britain. In addition to *Spring Awakening*, Sater has collaborated with Sheik on the NY premiere of *Umbrage* (HERE), *Nero* (The Magic Theatre, workshopped at the New York Shakespeare Festival and New York Stage & Film), and *The Nightingale* (workshopped at the O'Neill Musical Theatre Conference, La Jolla Playhouse, A.C.T., and New York Theater Workshop). He is also hard at work with System of a Down's Serj Tankian on a musical version of *Prometheus Bound*, to be directed by Diane Paulus at the American Repertory Theater. Sater is the lyricist for Sheik's critically acclaimed album *Phantom Moon* (Nonesuch), and together the two wrote the songs for Michael Mayer's feature film *A Home at the End of the World* (Warner Classics) as well as the independent features *Brother's Shadow* and Mary Stuart Masterson's *The Cake Eaters*. Sater is also co-creator and executive producer, with Paul Reiser, of recent pilots for both NBC and Sony/FX, and has developed two projects for HBO, and another for Showtime (with Reiser). He is also at work, with Jessie Nelson, on a feature film and is creating an original movie musical for producer Larry Mark. In addition, Steven works as a lyricist with various composers in the pop/rock world - recently writing songs with Burt Bacharach, Jonny Mandel, Andreas Carlsson, and William Joseph.

DUNCAN SHEIK (MUSIC): In addition to writing the music for *Spring Awakening* (2007 Tony Awards for "Best Orchestrations" and "Best Original Score", 2008 Grammy Award for "Best Musical Show Album"), Sheik's other theater credits include: *Nero* (*Another Golden Rome*) (currently in development), *The Nightingale* (currently in development), *Whisper House* (currently in development). Recorded works include: *Whisper House* (Sony/Victor 2009), *White Limousine* (Rounder 2006), *Daylight* (Atlantic Records 2002), *Phantom Moon* (Nonesuch 2001), *Humming* (Atlantic Records 1999), *Duncan Sheik* (Grammy Nomination "Best Male Vocal") (Atlantic Records 1996). Film Scores include: *DARE* (2009), *Little Spirit: Christmas in New York* (2008), *Capers* (2007), and *The Cake Eaters* (2007). Producer Credits include: Holly Brook (forthcoming CD 2009), Micah Green (2008), *Spring Awakening* Original Cast Album (Universal 2007) and Chris Garneau (2006).

PRODUCTION TEAM BIOS

ANNMARIE MILAZZO (VOCAL ARRANGEMENTS): Composer/lyricist: *Pretty Dead Girl*, Sundance Film Festival. Vocal arranger Broadway productions of *Spring Awakening* and *Next To Normal*, *Bright Lights*, *Big City* at the New York Theater Workshop, and the Paramount feature film, *The Marc Pease Experience*. AnnMarie is a Grammy nominated singer from The East Village Opera Company on Universal/Decca.

SIMON HALE (STRING ORCHESTRATIONS): After graduating from the University of London with an honors degree in composition, Simon Hale's acclaimed solo album, *East Fifteen*, led to recordings with many artists, including George Benson, Simply Red, Jamiroquai and Björk. In 1996 he orchestrated Duncan Shiek's first album, and their musical collaboration has continued ever since. Simon's involvement with *Spring Awakening* marked his Broadway debut and the Tony Award for Best Orchestrations in 2007. He continues to work with Steven Sater and Duncan Shiek on other projects. For more information please visit www.simonhale.co.uk

SPRING AWAKENING ORCHESTRA

PIANO.....NICK STANFORD

GUITAR.....NICHOLAS ZAVAGLIA

VIOLIN.....PHOEBE SUZUKI

VIOLA.....TYLER GAURUDER

CELLO.....SARAH BARRETT

BASS.....MATT MCCAULEY

DRUMS.....BOB KOGUT/NATE DOBAS

SPECIAL THANKS

Connecticut Theatre Company would like to thank the many volunteers and team members that have worked to help make this production possible, including:


Eileen Blair
Emma Gulick
Kim Saltzman

Becky McLean
Nick Stanford
Leah Varrell

Kat Blair
Kathryn Lewis
Brendon Rogers

CRISIS RESOURCES

- **2-1-1 General Resources** 24 hour crisis phone number: finding services, education, prevention, counseling services, support groups, advocacy. (In CT: 2-1-1 | Outside of CT: 1-800-273-8255)
- [RAINN.org](https://rainn.org) (confidential online chat available), National Sexual Assault Hotline: 1-800-656-4673
- [Planned Parenthood](https://www.plannedparenthood.org) 1-800-230-7526



crossroads.
coffee

second anniversary

**ANNIVERSARY
CELEBRATION
APRIL 1 AND 2**

(sat. and sun. 8am to 2pm)

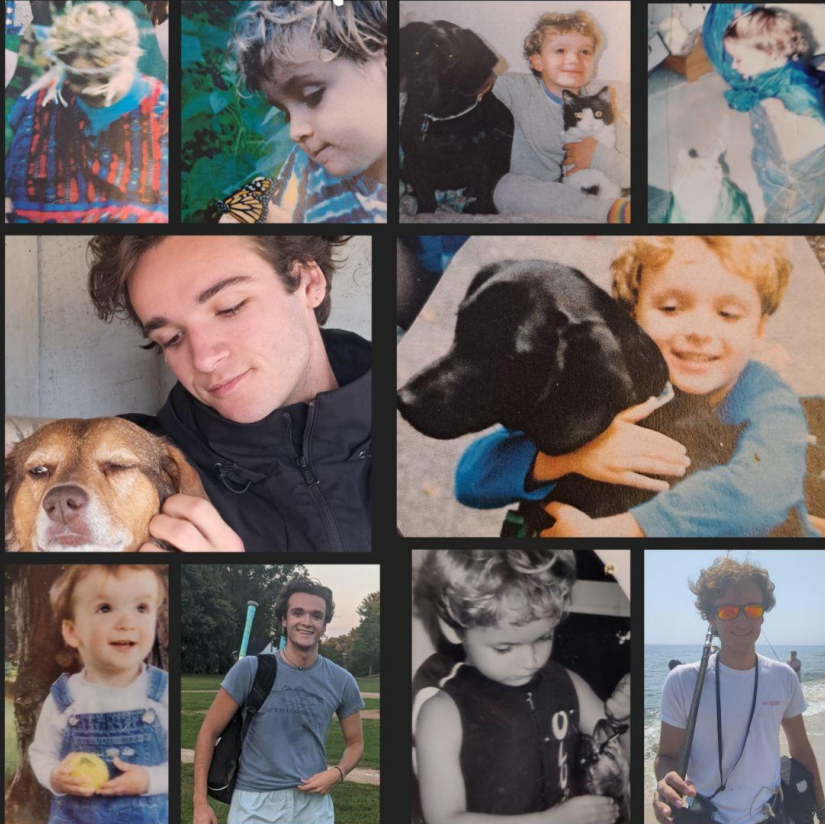
Featured coffee specials,
latte inspired milkshakes,
trivia, and more!

1878 Hartford Tpke
North Haven CT 06473



Keep following your
beautiful heart♡

G
A
L
E
N



G
A
L
E
N

Keep choosing your
beautiful wings♡

Kimberly...

**We are so proud of you!
We love you to the moon
and back! Break a leg!**

**Love,
Kristen, Samantha,
Maddie & Emma**



William
Pitt

Sotheby's
INTERNATIONAL REALTY



**Antonella
Vertucci**
REALTOR®

203.641.8566 | AVERTUCCI@WPSIR.COM
ANTONELLAVERTUCCI.WILLIAMPITT.COM